

XL ADULT
LARGE ADULT
ADULT
TEEN
PRETEEN
CHILD
TODDLER

Grainline

Casing: Fold over 1/4" (.7cm). Press

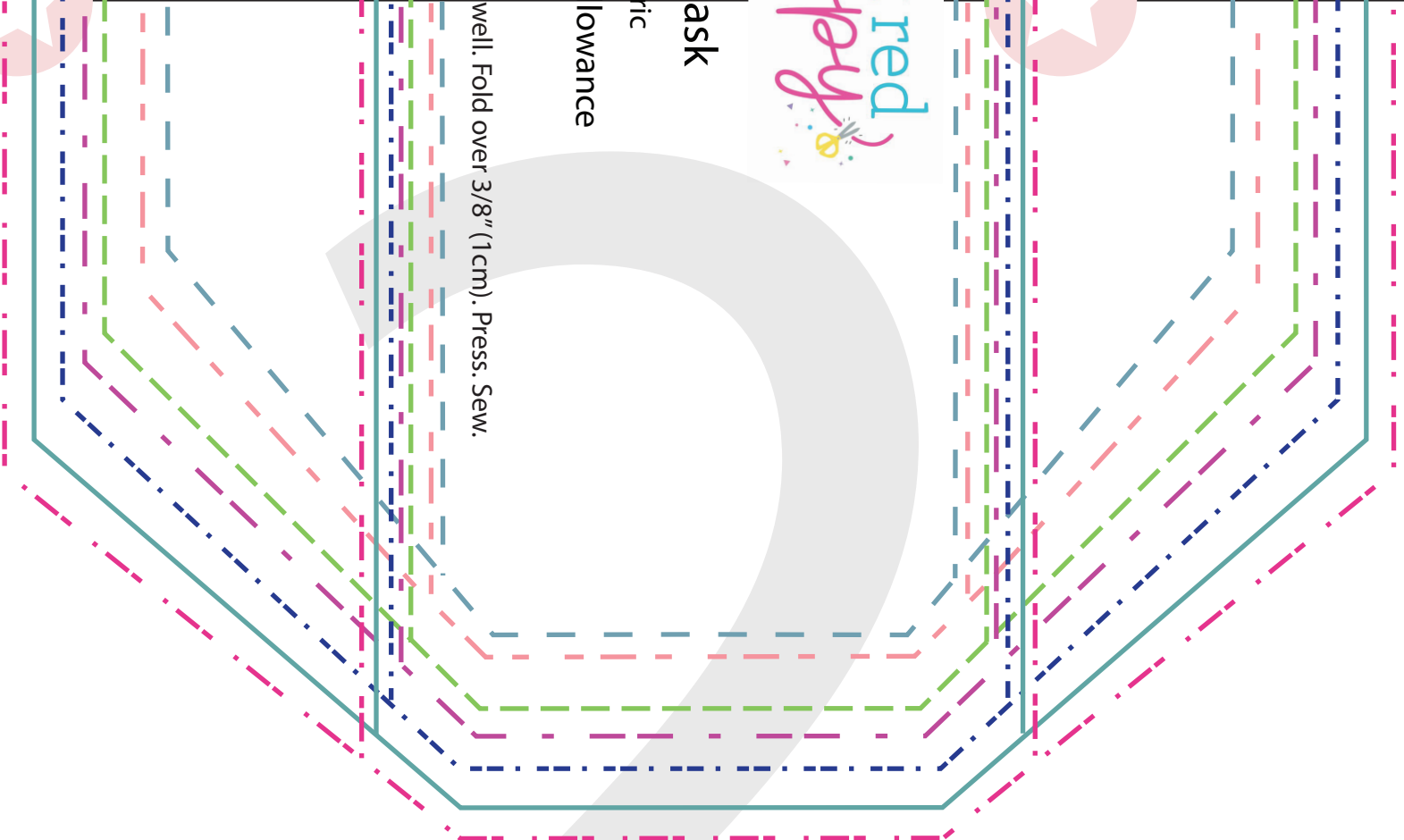
3-D M
Cut 2 Fab
3/8" seam at





ask
ric
lowance

well. Fold over 3/8" (1 cm). Press. Sew.



3



sweet red

poppy

XL ADULT
LARGE ADULT
ADULT
TEEN
PRETEEN
CHILD
TODDLER



3-D Mask

Cut 1 Fabric

3/8" seam allowance

Grainline

Fold over parallel sides towards wrong side of fabric by 1/2" (1.3cm). Press well.
Sew with 1/8" (.3cm) seam allowance.

